

Orkney and Shetland (2020)

This PDF file contains all the amendments for the above volume of the CCC Sailing Directions issued since the edition date shown in brackets. They are grouped by the date of issue and listed by page number. Plans are included only where major changes have been made or when certain amendments are difficult to describe.

Users should be aware that the amendments to this website are not made with the same frequency as those issued by official hydrographic and navigational sources. Accordingly it remains necessary for those who use the CCC Sailing Directions as an aid to navigation to consult the most recent editions of Admiralty charts, all relevant Notices to Mariners issued by the UKHO, NLB, Port Authorities and others in order to obtain the latest information.

Caution

Whilst the Publishers and Author have used reasonable endeavours to ensure the accuracy of the contents of the Sailing Directions, and these amendments to them, they contain selected information and thus are not definitive and do not include all known information for each and every location described, nor for all conditions of weather and tide. They are written for yachts of moderate draft and should not be used by larger craft. They should be used only as an aid to navigation in conjunction with official charts, pilots, hydrographic data and all other information, published or unpublished, available to the navigator. Skippers should not place reliance on the Sailing Directions in preference to exercising their own judgement.

To the extent permitted by law, the Publishers and Author do not accept liability for any loss and/or damage howsoever caused that may arise from reliance on the Sailing Directions nor for any error, omission or failure to update the information that they contain.

The plans in the Sailing Directions and amendments are not to be used for navigation. They are designed to support the text and should at all times be used with navigational charts.

How to use these amendments

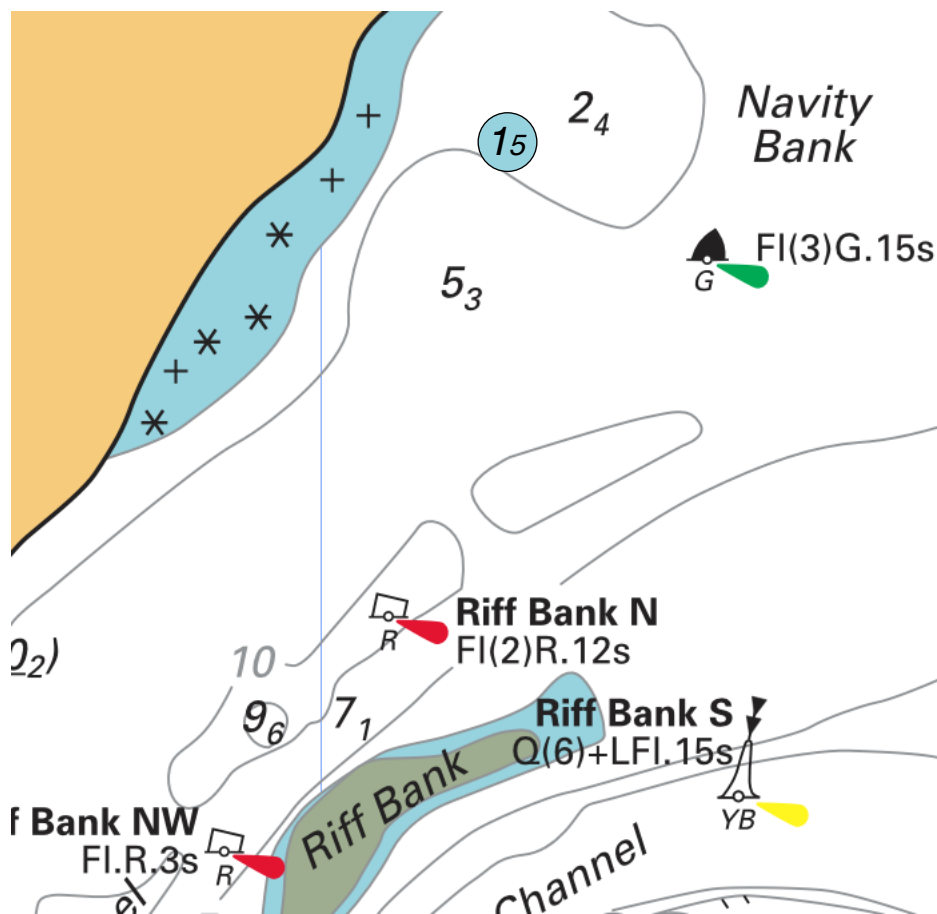
These amendments should be printed out in full and used in conjunction with the appropriate volume and edition of the Sailing Directions given at the head of this page. They are not intended to be cut out and pasted into the book, especially when the amendment is lengthy, as space is not always available. Most users choose to mark up the book with a cross reference to the more important amendments in the printout and write only very brief or minor amendments directly into the book.

Amendments added Apr 2021

A recent survey has recorded a patch with only 1.5m over it on the Navity Bank which lies due north of the Riff Bank.

p.35; Plan; **Insert** 2m contour with 1.5m sounding within it in position shown on the plan extract below.

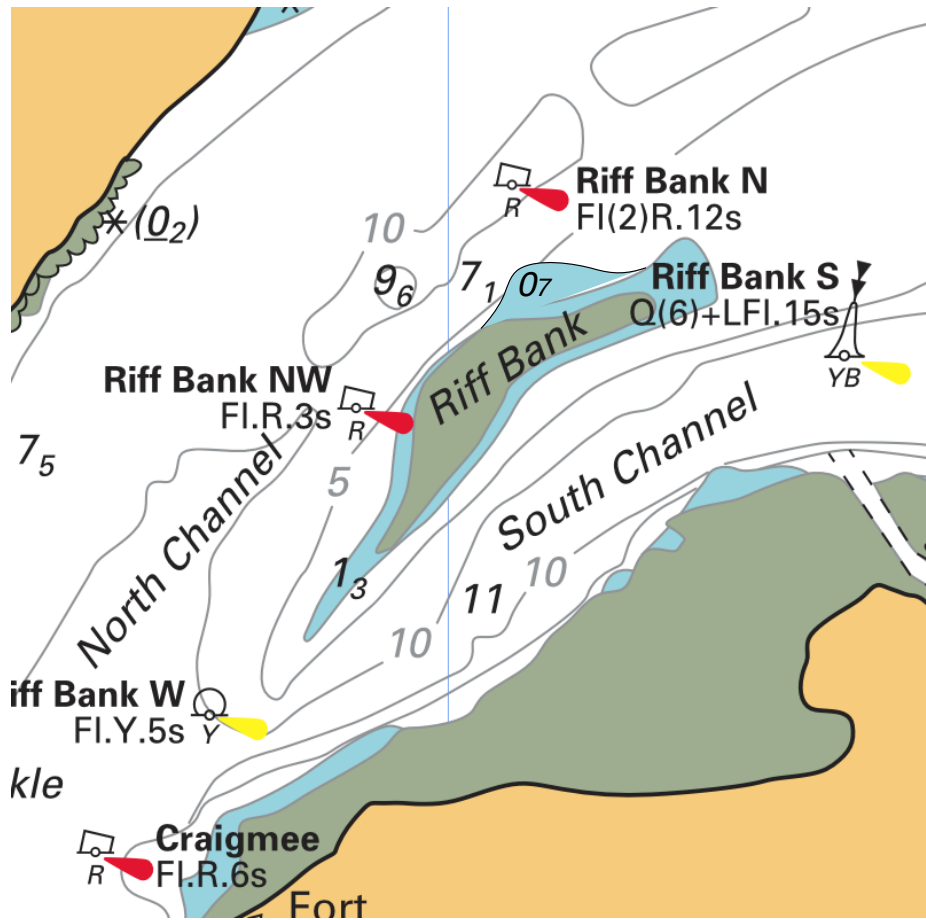
p.30; RH col; *Passage Wick to Inverness*; para 7; Line 5; **Delete** 2.4m and **substitute** 1.5m



A recent survey has recorded a patch with only 1.5m over it in Rosemarkie Bay.

p.35; Plan; **Insert** 2m contour enclosing a 1.5 sounding approximately 1.5 cables SW of Buckle Rock

A recent survey has found that the Riff Bank has extended towards the northwest.
p.35; Plan; **Amend** the north side of the Riff Bank by extending the 2m contour as shown on the plan extract below and inserting a sounding of 0.7m



p.46; Plan; **Insert** fish farm symbol close north of Hunda (just below 'East Ayre')

p.65; RH col; **Insert** after 'provide' at bottom of column: 'safe anchorages. A constant watch must be kept.'

Two breakwaters have been established on the east shore of Busta Voe forming a small private harbour. The entrance is lit.

p.110; RH col; After 2nd para. **insert** new para: 'Almost opposite, on the east shore, there is another small private harbour formed by two breakwaters which are lit at their outer ends.'

p.108; Plan; **Amend** as the plan extract below.

