

Outer Hebrides (2017)

This PDF file contains all the amendments for the above volume of the CCC Sailing Directions issued since the edition date shown in brackets. They are grouped by the date of issue and listed by page number. Plans are included only where major changes have been made or when certain amendments are difficult to describe.

Users should be aware that the amendments to this website are not made with the same frequency as those issued by official hydrographic and navigational sources. Accordingly it remains necessary for those who use the CCC Sailing Directions as an aid to navigation to consult the most recent editions of Admiralty charts, all relevant Notices to Mariners issued by the UKHO, NLB, Port Authorities and others in order to obtain the latest information.

Caution

Whilst the Publishers and Author have used reasonable endeavours to ensure the accuracy of the contents of the Sailing Directions, and these amendments to them, they contain selected information and thus are not definitive and do not include all known information for each and every location described, nor for all conditions of weather and tide. They are written for yachts of moderate draft and should not be used by larger craft. They should be used only as an aid to navigation in conjunction with official charts, pilots, hydrographic data and all other information, published or unpublished, available to the navigator. Skippers should not place reliance on the Sailing Directions in preference to exercising their own judgement.

To the extent permitted by law, the Publishers and Author do not accept liability for any loss and/or damage howsoever caused that may arise from reliance on the Sailing Directions nor for any error, omission or failure to update the information that they contain.

The plans in the Sailing Directions and amendments are not to be used for navigation. They are designed to support the text and should at all times be used with navigational charts.

How to use these amendments

These amendments should be printed out in full and used in conjunction with the appropriate volume and edition of the Sailing Directions given at the head of this page. They are not intended to be cut out and pasted into the book, especially when the amendment is lengthy, as space is not always available. Most users choose to mark up the book with a cross reference to the more important amendments in the printout and write only very brief or minor amendments directly into the book.

Amendments added Apr 2020

Page 23	Castlebay Marina ; New facilities building	No. 1173
	Marina facilities building now completed. p.23; RH col; <i>Supplies and services</i> ; Line 1; Delete 'Water and electricity at pontoons.' and substitute: 'Water, electricity and Wifi at pontoons with toilets, showers and laundry facilities onshore at the marina.'	

Page 55	Loch Keiravagh ; Fish farm established	No. 1178
	<p>A fish farm now obstructs much of the entrance to this loch. p.55; RH col; <i>Directions</i>; para 2; Add at end of para 'but much of this area is now occupied by a fish farm.' p.55; RH col; <i>Directions</i>; para 3; Delete 'When 1 cable southeast ... submerged rocks' and substitute 'Identify the green conical lateral mark that lies 4 cables SW of Greanamul Deas by cautiously closing the SE of Greanamul Deas. Steer towards this mark to pass close to its south and using caution as many of the fish farm buoys have some rope adjacent to them.' p.55; RH col; <i>Anchorage</i>; Line 3; Insert after '4m': 'mud,'</p>	
Page 56	Benbecula, Loch Uiskevagh ; Rock reported	No. 1177
	<p>p.57; LH col; <i>Directions</i>; para 2; Delete entire para and substitute 2 new paras: 'From the north, keep at least ½ mile off the Ronay shore to avoid Ritchie Rock and giving Greanamul (16m) a good berth, then head SW to pick up the leading line. This leads between two large fish farms and bears 264° on the ruined white house at the head of the loch, as shown on the chart. Note that west of the fish cages rocks with less than 2m over them lie close north and south of the line. The shallower, to the north, has a LD of 0.9m and without local knowledge approach at LWS should be avoided. The latest edition of chart 2904 is strongly recommended. p.56; Plan; Insert symbol for rock with less than 2m in a position 2c SSE of Bogha Liath; insert a further 2m rock symbol at the south eastern extremity of the 2m contour extending SE from Bogha Liath with (0.9) label adjacent.</p>	
Page 68	Outer Loch Maddy ; Caolas Loch Portain	No. 1179
	<p>A fish farm has been established at the southern end of Caolas Loch Portain and Mackay Rock reported as drying approximately 2.5m. p.68; RH col; <i>Loch Portain; Directions</i>; Insert at beginning: 'Leaving the fish farm to starboard,' p.68; Plan; Insert fish farm symbol in the position occupied by the 's' of 'Caolas' and amend drying height of Mackay Rock to (2.5)</p>	
Page 71	Loch Maddy ; Mooring buoys removed	No. 1186
	<p>The two visitors' moorings south of the pontoons have been removed. p.71; LH col; <i>Anchorage</i>; para 2; Delete para 2 and substitute: '<i>Off the marina</i> Anchor in 3-4m south of the pontoons so as to keep well clear of ferries and the approach to the marina but note the reef to the SW (dries 1.7m), marked by a perch with a topmark. p.70; Plan; Delete the visitors mooring symbol south of the pontoons and substitute an anchor symbol</p>	
Page 74	Sound of Harris, Hermetray ; Fish farm established	No. 1215
	<p>A large fish farm has been established between Greanem and Sight Rock . p.74; RH col; para 2; Line 3; Delete all from 'visibility is good ... summit of Tahay' and substitute 'visibility is good, identify Greanem 3 cables NE of Hermetray and steer to pass between it and a fish farm to its north, on a course of 260° to the summit of Tahay.' p.74; Plan; Insert symbol for fish farm NNW of Greanam (in approximately the position of the label 'To Scaravay 2 miles')</p>	
Page 88	Eilean Glas light, Scalpay ; Range reduced	No. 1203
	<p>p..101; LH col; <i>Lights</i>; Line 1; Amend range of Eilean Glas light to 18M p..107; RH col; <i>Lights</i>; Line 6; Amend range of Eilean Glas light to 18M p.100; Plan; Amend range of Eilean Glas light to 18M p.88; Plan; Amend range of Scalpay (Eilean Glas) light to 18M</p>	

The three visitors' moorings in the pool have been removed.

p.91; LH col. *Anchorage*; **Delete** 'The centre of the pool ... kedge may be necessary.' and **substitute**: 'Anchoring is possible almost anywhere in the pool now the moorings have been removed but the holding is reported as being poor throughout, even in the centre which is deep. In the north of the pool, off the quay and stone ramp, soundings are slightly less but swinging room is restricted and a kedge may be necessary.'

p.91; RH col; para 1; Line 6; **Delete** 'Holding ground is reported poor throughout the pool.'

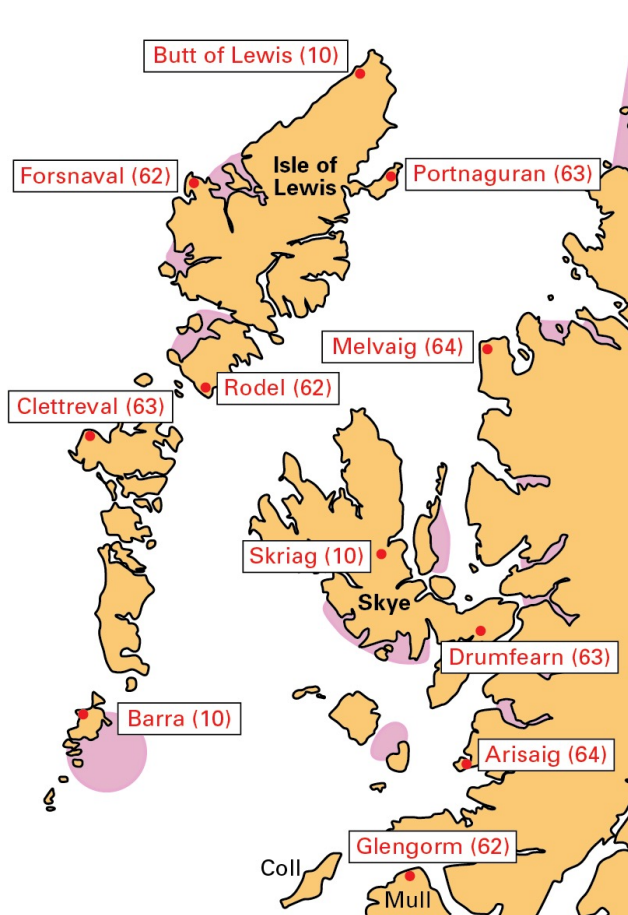
p.91; Plan; **Delete** all visitors' mooring symbols.

p.138; Plan; **Insert** 2m rock symbol enclosed by 2m contour with label (1) adjacent in a position midway between Bo Usbig and the drying reef to the north of it

Amendments added Apr 2019

p.7; RH col; Line 4; **Amend** '62' to '63' and Line 6: **Amend** '63' to '62'

p.13; Plan; **Substitute** the plan with amended plan below.



The Western Isles Council have imposed a minimum amount of 100 litres on all diesel obtained from their key fob operated tanks. This does not apply to diesel obtained through Stornoway Harbour or from the Western Isles tank at Scalpay where the marina can arrange for small quantities to be supplied in cans.

p.11; RH col; *Diesel*; para 2; Line 6; **Delete** all from 'All installations ... the Western Isles Council' and **substitute**: 'All installations apart from Stornoway and Scalpay are operated by Comhairle nan Eilean Siar, the Western Isles Council. A 100 litres is the minimum quantity that can be supplied.'

p.11; RH col; *Diesel*; para 3; Line 4; **Delete** all from 'In Scalpay ... to be appointed' and **substitute**: 'In Scalpay, the marina manager can supply diesel in 25 litre cans at the pontoon or 100 litre amounts by hose at the pier.'

There are no visitors' moorings in Castle Bay, leaving only the marina and a small space for anchoring south west of it. Shore facilities at the marina consisting of showers, toilets and laundry are currently (April 2019) under construction and nearing completion.

p.23; RH col; *Anchorage*; para 1; **Delete** the whole para. and **substitute**: '*Castlebay* There is a marina on the west shore of the bay with 28 visitors' berths. The area east and north of the marina pontoons is foul with recently abandoned mooring tackle and anchoring there is certainly not advisable. There is also the risk of obstructing the ferry which can, depending on conditions, swing quite close to the pontoons. There is space for a few yachts to anchor, in soft mud over hard sand, between the pontoons and the reef (dries 2.9m and beacon lit Fl.R.2s) on the west side of the bay.'

p.23; LH col; *Lights*; **Insert** new line after line 9: 'Marina breakwater pontoon Fl.R.4s 2m1M'

p.22; Plan; **Add** light symbol and label 'Fl.R.4s' to the east end of the marina pontoon.

p.22; Plan; **Amend** the label relating to the lit beacon south of the marina to 'Fl.R.2s'

p.29; LH col; *Anchorage*; para. 2; Line 1; **Insert** after 'buoys': '(reported missing in 2018)'

p.34; Plan; **Insert** ferry slip with light F.R. on its outer end as shown on the plan extract below.



Page 47 Loch Skipport ; Tidal constant amendment

No. 1130

p.47; LH col; *Tides*; Line 1; **Delete** '(−0602 Dover)' and **substitute** '(−0512 Dover)'

Page 53 Peter's Port, Benbecula ; Slipway light

No. 1167

p.53; RH col; *Anchorage*; para.2; Line 3; **Replace** 'outer' with 'inner'

Page 57 Caolas Wiay Beag, Benbecula ; Minor correction

No. 1149

p.57; RH col; *Anchorage*; Line 3; **Insert** 'no' before 'longer'

Page 59 Kallin, Benbecula ; Facilities

No. 1150

p.59; RH col; *Supplies*; Line 2; **Delete** 'Limited' and Line 4; **Insert** 'and cafe' after 'factory'

Page 74 Hermetray, Sound of Harris ; Tidal stream amendment

No. 1140

p.74; LH col; *Tides*; Line 3; **Delete** 'southeast-going' and **substitute** 'northwest-going'
 p.74; LH col; *Tides*; Line 5; **Delete** 'northwest-going' and **substitute** 'southeast-going'

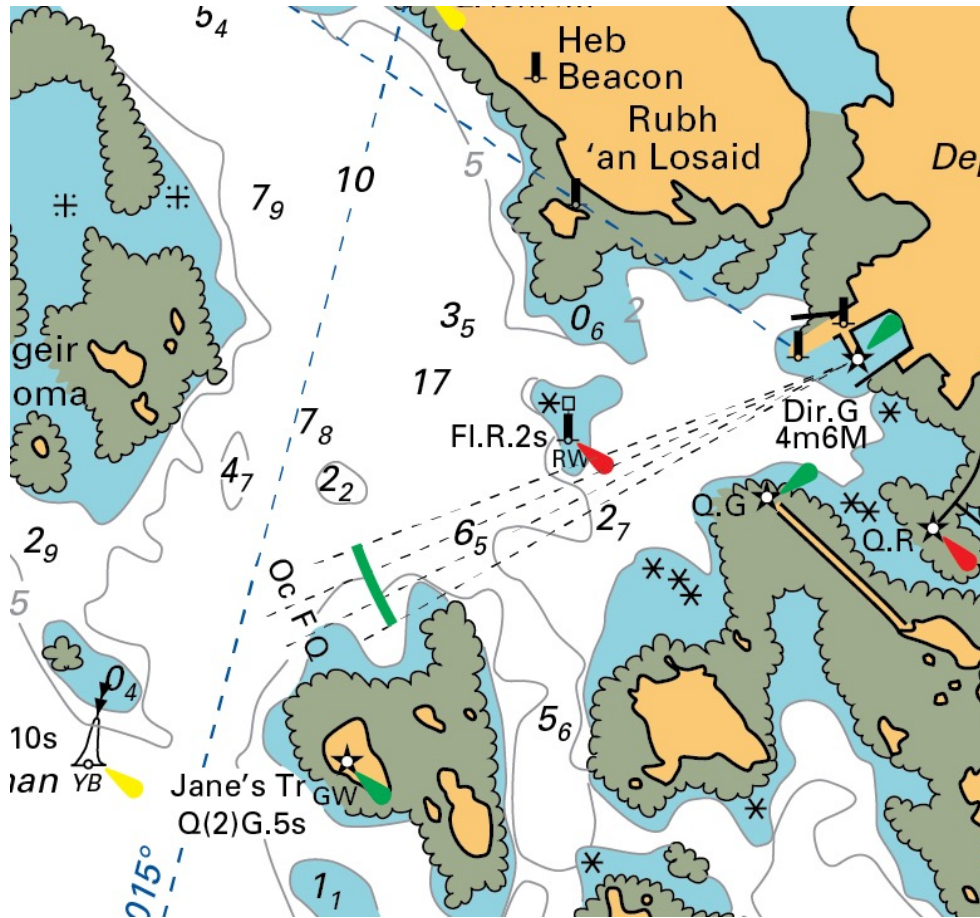
Page 81 Grocis Sgeir, Sound of Harris ; Beacon established

No. 1172

An unlit beacon has been established on Grocis Sgeir which lies SW of Grocis North on the Ferry Route.

p.81; Plan; **Insert** symbol for an unlit beacon (red) with a port hand topmark on the drying rock Grocis Sgeir.

The Leverburgh leading lights have been extinguished but the beacons remain unlit. A new directional light has been established on the pierhead opposite the ferry slip p.86; RH col; *Lights*; Lines 1&2; **Delete** both lines and **substitute**: 'Leverburgh pier Dir.G' p.86; Plan; **Amend** as shown on plan below.
p.84; Plan; **Amend** as shown on plan below

Page 95 **Loch Stockinish, Bo na h'Airde ; Beacon now lit**

No. 1151

p.95; RH col; *Directions*; para 1; Line 6; **Insert** '(Q(6)+LFl.15s4m4M)' after 'perch'
p.94; Plan; **Add** '(Q(6)+LFl.15s4m4M)' to 'Bo na h'Airde'

Page 116 **Sound of Shiant ; Tidal stream amendment**

No. 1141

p.116; LH col; *Tides; Sound of Shiant*; para 1; Line 1; **Delete** -0315 and **substitute** -0305
p.116; LH col; *Tides; Sound of Shiant*; para 1; Line 2; **Delete** -0310 and **substitute** +0320

Page 127 **Loch Grimshader, Lewis ; Beacon missing**

No. 1109

Sgeir a'Chaolais is shown as having a beacon on chart 2529 but this has been missing for some time.

p.127; LH col; *Directions*; Line 3; **Insert** after '(dries 3.7m': 'and unmarked although beacon shown on Chart 2539)'

Page 152 **Butt of Lewis ; Tidal time amendment**

No. 1142

p.152; RH col; *Tides*; Line 2; **Delete** '(+0335 Dover)' and **substitute** '(+0330 Dover)'

p.104; RH col; *Mooring and berthing*; Line 1; **Amend** 'six' to 'five'

p.105; LH col; *Facilities*; Line 2; **Insert** before 'diesel': 'red' and Line 3; **Insert** after 3M: or 'white diesel 1/4 M'

Amendments added Apr 2018

Page 23 **Castle Bay, Barra; Channel Rk lights**

No. 1039

p.23; LH col; *Lights*; Line 5; **Amend** range to 6/4M

Page 36 **Acairseid Mhor, Eriskay; Chart ref. amended**

No. 1040

p.36; Chart ref. box; **Amend** Imray chart ref. to C66

Page 37 **Acairseid Mhor, Eriskay; Diesel fob needed**

No. 1046

p.37; *Supplies*; Line 2; **Delete** 'card' substitute 'fob'

Page 71 **Lochmaddy marina; Facilities**

No. 1041

p.71; RH col; *Services and supplies*; Line 4; **Insert** after 'water': 'and electricity'

p.71; RH col; *Services and supplies*; Line 5; **Delete** '(ask at tourist office)' and **substitute**: 'at marina.'

p.71; RH col; *Services and supplies*; Line 7; **Delete** all from 'Showers/baths ... sports centre' and **substitute**: 'Toilets, shower and laundry at marina'

Page 91 **Rodel, South Harris; Hotel closed**

No. 1042

p.91; RH col; *Services*; **Delete** 'Hotel (closed in 2016, re-opening date uncertain).

p.91; Plan; **Delete** 'Hotel'

Page 120 **North Minch; Light ranges amended**

No. 1043

p.120; LH col; para. *Lights*; Line 3; **Amend** range of Stoer Head to 18M and Line 9 **Amend** range of South Rona to 12M

Page 135 **North Uist, Griminish Harbour; Directional light established**

No. 1044

A directional light has been established on the front beacon of the 183° leading line.

p.135; LH col; *Lights*; Line 2; **Delete** all and **substitute**: 'Ldg Line Dir.WRG4s6M'

p.135; LH col; *Directions*; **Delete** 'Bring ... 183°' and **substitute**: ': Acquire the leading line (183°; Dir.WRG4s6M)'

p.134; Plan; **Delete** both Fl.G lights on the 183° leading beacons and **substitute** 'Dir. WRG4s6M. on the front beacon

Page 160 **Appendix - Quick reference table; Scalpay shop closed**

No. 1045

p.160; Table; *Scalpay*; **Delete** 'L' in the *Shop* column