

Ardnamurchan to Cape Wrath (2017)

This PDF file contains all the amendments for the above volume of the CCC Sailing Directions issued since the edition date shown in brackets. They are grouped by the date of issue and listed by page number. Plans are included only where major changes have been made or when certain amendments are difficult to describe.

Users should be aware that the amendments to this website are not made with the same frequency as those issued by official hydrographic and navigational sources. Accordingly it remains necessary for those who use the CCC Sailing Directions as an aid to navigation to consult the most recent editions of Admiralty charts, all relevant Notices to Mariners issued by the UKHO, NLB, Port Authorities and others in order to obtain the latest information.

Caution

Whilst the Publishers and Author have used reasonable endeavours to ensure the accuracy of the contents of the Sailing Directions, and these amendments to them, they contain selected information and thus are not definitive and do not include all known information for each and every location described, nor for all conditions of weather and tide. They are written for yachts of moderate draft and should not be used by larger craft. They should be used only as an aid to navigation in conjunction with official charts, pilots, hydrographic data and all other information, published or unpublished, available to the navigator. Skippers should not place reliance on the Sailing Directions in preference to exercising their own judgement.

To the extent permitted by law, the Publishers and Author do not accept liability for any loss and/or damage howsoever caused that may arise from reliance on the Sailing Directions nor for any error, omission or failure to update the information that they contain.

The plans in the Sailing Directions and amendments are not to be used for navigation. They are designed to support the text and should at all times be used with navigational charts.

How to use these amendments

These amendments should be printed out in full and used in conjunction with the appropriate volume and edition of the Sailing Directions given at the head of this page. They are not intended to be cut out and pasted into the book, especially when the amendment is lengthy, as space is not always available. Most users choose to mark up the book with a cross reference to the more important amendments in the printout and write only very brief or minor amendments directly into the book.

Amendments added Apr 2020

Page 48 **Loch Scresort, Rum ; Visitors' moorings laid**

No. 1121

p.48; RH col; *Anchorage*; **Delete** para 3 and **substitute**: 'Ten visitors' moorings have been laid but there is space to anchor between the moorings and the old stone pier further west, or anywhere where suitable soundings can be found.'

Page 72	Armadale, Isle of Skye ; Closure of yacht charter operation	No. 1194
	p.72; LH col; para 1; Line 3; Delete 'It is the base ... all the moorings' p.72; RH col; <i>Anchorage</i> ; para 1; Delete 'There are many moorings ... found for visitors' and substitute 'There are 4 or 5 visitors' moorings operated by Isle of Skye Yachts.' p.72; RH col; <i>Services and supplies</i> ; para 1; Line 2; Delete 'bar' and Line 3; Delete 'skips' and substitute 'bins' p.72; RH col; para 2; Delete entire para and substitute: 'The visitors' moorings (yellow buoys) are managed by Isle of Skye Yachts (01471 844216) for which the fee should be placed in the honesty box at the top of the steps leading up from the pontoon. Diesel and water <u>may</u> be available by advance notice but is limited by staff availability.' p.72; RH col; <i>Services and supplies</i> ; para 4; Delete entire para.	
Page 77	Loch Hourn, Camus Ban, Arnisdale ; Fish farm	No. 1210
	LH col; <i>Anchorages; Camas Ban, Arnisdale</i> ; Line2; Insert after 'moorings': 'and fish farm equipment'	
Page 83	East Loch Alsh ; Reduced sounding reported	No. 1211
	p.82; RH col; <i>Directions</i> ; para 4; last line; Insert after 'rock'; 'LD 0.3m' p.82 Plan; Insert (0.3) adjacent to 2m rock symbol SE of Glas Eilean	
Page 91	Plockton ; Water supply	No. 1195
	p.91; LH col; <i>Services and supplies</i> ; Line 2; Delete all from 'Water from tap ... end of village' and substitute 'Water is on the temporary berthing pontoon, courtesy of the Ferry House, and the master tap inside their drive gates' p.90; Plan; Delete 'SC (water)' and substitute 'Sailing Club'	
Page 92	Lochcarron Bay ; Reduced depth reported	No. 1212
	p.92; RH col; Insert new para before para 1; 'A recent (2019) survey indicates that the leading line passes over, or very close to, a rock (LD 1.9m) due west of Sgeir Fhada. This should not be a problem except for deep keel yachts at the lowest spring tides.'	
Page 95	Poll Creadha ; Leading line	No. 1188
	p.95; RH col; <i>Directions</i> ; para 2; Line 7; Delete 'Much of this cottage is now obscured by a tree.' p.95; Photo caption; Add : 'The tree obscuring the cottage has now been felled.'	
Page 103	Badachro ; No showers	No. 1192
	p.103; RH col; <i>Supplies and services</i> ; Line 1; Delete '(showers)'	
Page 104	Gairloch ; Flowerdale harbour	No. 1198
	p.104; RH col; <i>Anchorage</i> ; Line 1; Delete 'Anchoring is possible and the best place is' and substitute 'There is very limited space for anchoring'	
Page 112	Eilean Fladday ; Fladday Harbour holding	No. 1202
	p.112; RH col; <i>Anchorages; Fladday Harbour</i> ; para 3; Add at end 'but moderate holding.'	
Page 114	Acairseid Mor, Rona ; New moorings	No. 1182
	p.114; RH col; <i>Anchorage</i> ; Delete paras 1 & 2 and substitute : 'Anchor northeast of Harbour Island or in the northwestern bay, in 4-6m, black mud. Space is now more restricted because of the visitors' moorings but anchoring is still possible. Beware of the rocks which lie close west of the pontoon and the reef extending from the northwest corner of the bay. There are six visitors' moorings: one off the pontoon, two in the northeastern bay and three in the northwestern bay. Mooring dues payable at Rona Lodge.'	

Page 119	Point of Stoer ; Minor amendment	No. 1187
	p.119; RH col; <i>Dangers and marks</i> ; Line 6; Delete 'northwest' and substitute 'southwest'	
Page 121	Loch Ewe ; Fish farm, Poolewe	No. 1204
	p.121; Plan; Insert fish farm symbol 2c SE of Boor Rocks.	
Page 124	Loch Kanaird ; Anchorage in East Loch Kanaird	No. 1193
	p.124; RH col; <i>Anchorage</i> ; para 3; Add new para: 'Alternatively anchor in the north of the bay off the shingle beach in about 6m, noting the drying rock to the southeast.' p.124; Plan; Insert anchor symbol south of small headland in the north of the bay. Add drying rock symbol in 2m shoal area southeast of the anchor.	
Page 126	Summer Isles ; Approach from south & southwest	No. 1205
	p.126; LH col; para 1; Delete last two lines and insert new para: 'Approaching from the south or southwest be aware that there are several dangerous sunken rocks west and northwest of Eilean Dubh. In poor visibility it is best to pass east of Eilean Dubh.'	
Page 129	Enard Bay, Loch an Eisg-Brachaidh ; Shelter and holding	No. 1199
	p.129; LH col; <i>Anchorage</i> ; <i>Loch an Eisg-Brachaidh</i> ; Line 1; Delete 'offers quite good shelter' and substitute 'offers good shelter in offshore winds' p.129 RH col; para 1; Add at end 'although poor holding on a rocky bottom has been reported.'	
Page 131	Lochinver ; Marina electricity & HM contact details	No. 1176
	p.131; LH col; <i>Supplies and services</i> ; Line 1; Insert : 'Electricity on pontoons (obtain key from HM),' p.131; LH col; <i>Communications</i> ; Line 1; Amend Harbourmaster mobile number to: '07958 734610'	
Page 145	Kinlochbervie ; Various	No. 1196
	p.145; <i>Supplies and services</i> ; LH col; Insert after 'Spar shop': '(open to 8pm)' Add at end of para: 'Taxi 07761 829130'	

Amendments added Apr 2019

Page 7

Introduction ; Coastguard aerial channels

No. 1161

Amendment No.1023 published in April 2018 is cancelled and the following amendments to the original 2017 printed edition should be made:

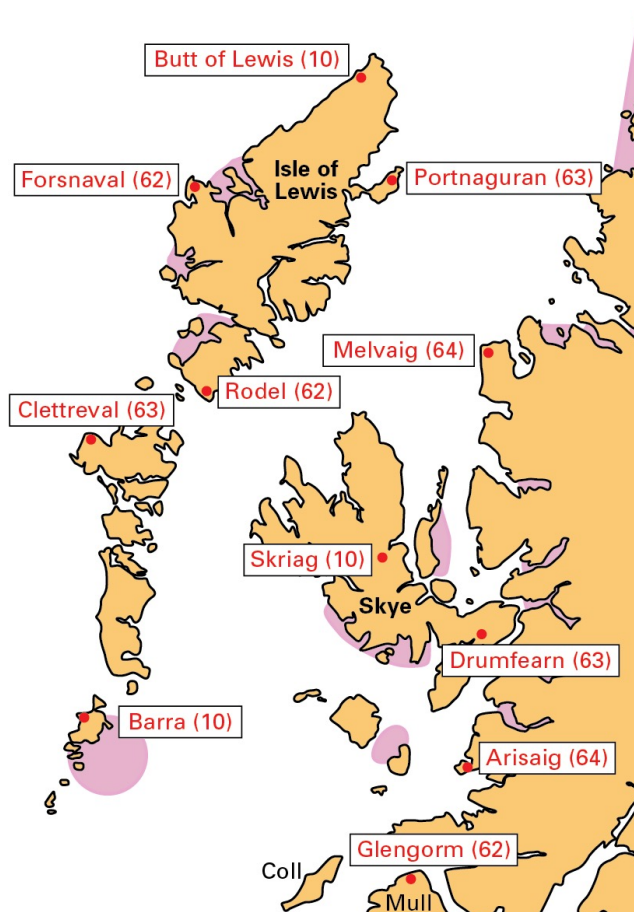
p.7; LH col; *Coastguard channels*; para. 7; Line 3; **Delete** 'Ch. 23, 84, 86' and **substitute** Ch 62, 63, 64'

p.7; RH col; para 1; Line 5; Delete '23' and substitute '63'

p.7; RH col; para 1; Line 6; Delete '84' and substitute '62'

p.7; RH col; para 1; Line 7; Delete '86' and substitute '64'

p.13; Plan; **Substitute** plan below.



Page 10

Introduction ; Correction to cross-reference

No. 1135

p.10; LH col; para 3; Line 3; **Amend** p.149 to p.151

Page 17

Ardnamurchan Point Lt. ; Range reduced

No. 1163

p.17; RH col; *Lights*; Line 1; **Amend** to 'Fl.20s55m18M'

p.16; Plan; **Amend** range of Ardnamurchan Lt. as above.

Page 48

Isle of Rum ; Shop opening hours

No. 1146

p.48; RH col; *Supplies*; Line 2; **Delete** '(open 1700-1900)' and **substitute** '(opening hours variable)'

Page 85

Kyle Akin and Inner Sound ; Tidal stream amendments

No. 1139

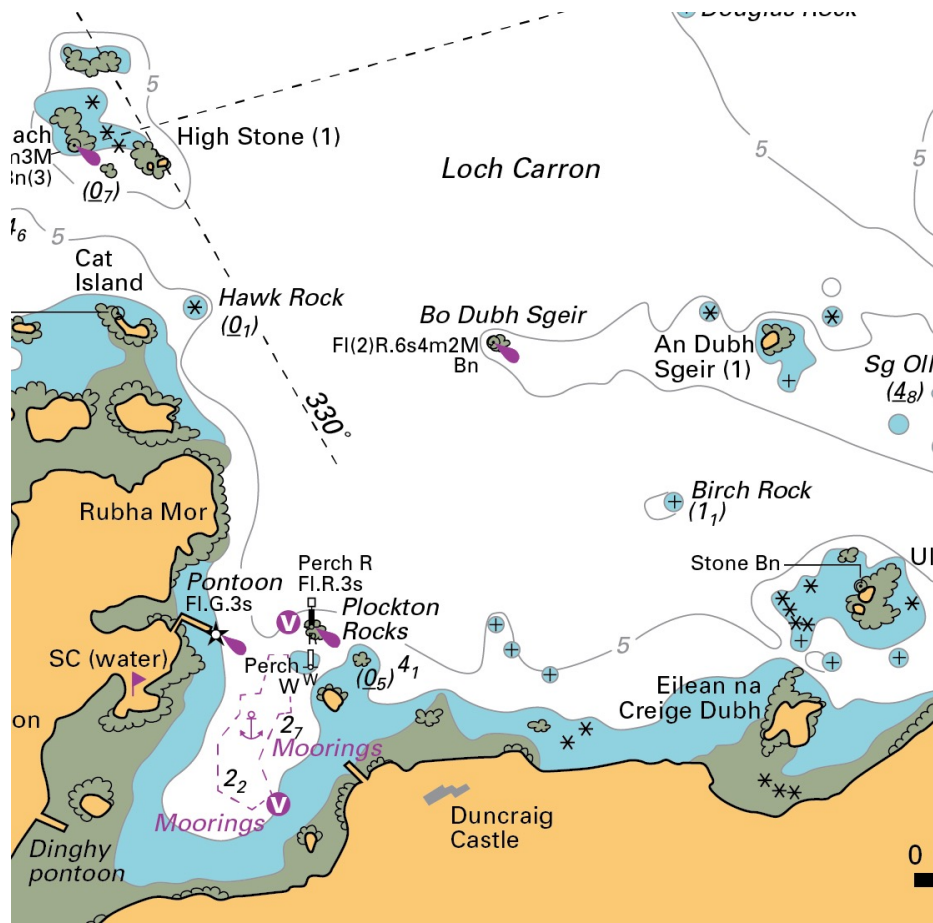
p.85; LH col; *Tides*; Line 3; **Delete** (+0050 Dover) and **substitute** (+0505 Dover)

p.85; LH col; *Tides*; Line 7; **Delete** (+0110 Dover) and **substitute** (+0205 Dover)

p.88; LH col; *Tides*; Line 6; **Delete** (-0415 Dover) and **substitute** (-0425 Dover)

Two rocks with less than 2m over them have been reported lying to the east of Plockton Rocks.

p.90; Plan; **Amend** as plan below:



p.95; RH col; *Supplies*; Line 3; **Amend** 3-5 miles to 2-3¹/₂

P.97; LH col; *Arinacrinachd Bay*; Last line; **Add** after 'Good holding': 'but avoid moorings.'

A 2018 Antares survey has found a rock with only 0.7m over it where previously the Admiralty chart showed a 3.8m. sounding.

p.88; Plan; **Insert** a symbol for a rock with less than 2m over it in a position between the 'n' and 'g' of 'Moorings' and **delete** the label 'Moorings'

p.119; RH col; para. *Lights*; Line 1; **Amend** '24M' to '18M'

p.123; RH col; *Supplies*; Line 10; **Insert** at end; 'Boatyard at Corry, 11/2M SE of Ullapool, wooden boat specialists, able to help with most repairs, 20T hoist.'

p.123; RH col; *Communications*; **Insert** 'Boatyard, Johnson & Loftus tel. 01854 613886'

Page 131 **Lochinver ; Chandlery under new ownership** No. 1148
p.131; LH col; Supplies and services; Line 4; **Delete** 'Lochinver Fish Selling Co.' and **substitute** 'Mackays Hardware'

Page 142 **Scourie ; Anchorage amendment** No. 1158
p.142; LH col; *Scourie*; Line 9; **Delete** 'Anchor east... in 7m' and **substitute** 'Anchor north of a line of islets, in 7m, or at neaps further into the bay in 1.5m.'

Page 152 **Appendix/Introduction ; Distance tables amendment** No. 1126
p.152; Distance table *Tobermory to Canna and Skye Bridge*; Distance between Mallaig and Eigg Harbour; **Delete** '22' and **substitute** '13' in both instances

Amendments added Apr 2018

Page 7 **Introduction ; Coastguard forecast channels changed** No. 1023
The changes to the channels on which the Coastguard broadcast MSI weather forecasts have now taken effect. The new channels are as given in the pink text box in the margin of p.7
p.7; LH col; *Coastguard channels*; para. 7; Line 3; **Delete** 'Ch. 23, 84, 86' and **substitute** Ch 62, 63, 64'
p.7; RH col; para. 1; Line 5; **Substitute** '62' for '23'; Line 6; **Substitute** '63' for '84'; Line 7; **Substitute** '64' for '86'
p.13; Plan; make the above substitutions to the aerial location plan.

Page 43 **Port Mor, Muck ; Amended telephone no.** No. 1047
p.43; RH col; *Supplies*; Line 1; **Delete** 01687 462990, **substitute** 07908 956822

Page 51 **Canna Harbour ; Cafe Canna, VHF** No. 1048
p.51; RH col; *Supplies*; Line 1; **Delete** 'Ch 86' **substitute** 'Ch 8'

Page 54 **Loch Eishort, SW Skye ; Additional anchorages** No. 1034
p.54; RH col; *Anchorage, East of Heast Island*; **Delete** entire para. and **substitute**: '*East of Heast Island* gives the best protection from the west. There are many moorings but space to anchor can be found between the outer ones and those south of the fish farm pontoon. A tripping line is recommended.'
p.54; RH col; *Anchorage, Bagh an Dubh Ard*; **Add** new para.: '*Antares Charts* have surveyed two temporary anchorages among the skerries and beaches to the west of Bagh an Dubh Ard where, at half tide or less, it is possible to obtain some shelter from the southwest and enjoy distant views of the Cuillins.'
p.54; RH col; *Anchorage*; **Add** new para.: '*Head of Loch* From Heast Island to the head of the loch is clean if the north shore is given a berth of a cable but a large mussel farm lies in the middle. Anchorage can be found beyond this, either in the bay on the north shore or off the southern shore. There are several moorings which must be avoided and a tripping line is recommended. The pool at the very head of the loch is constricted and subject to strong tidal streams.'

Page 58 **Camus nan Gall, Soay ; Anchorage** No. 1035
p.58; RH col; *Anchorage, Camus nan Gall*; **Delete** entire para. and **substitute**: '*Camus nan Gall* on the southeast coast of Soay gives shelter from west to north. It had a reputation for poor holding but good holding in sand can be found in 6m, off the extreme western side of the bay. The head is foul.'

Page 59	Neist Point, Skye ; Anchorage	No. 976
	p.59; RH col; <i>Anchorage</i> ; Add new entry: ' <i>Neist Point</i> The bay immediately to the east of Neist Point offers shelter from northerlies and is a useful passage anchorage in settled weather. Anchor in 6m towards the head of the bay.'	
Page 60	Carbost, Loch Harport ; Visitors' moorings and pontoon installed	No. 1053
	p.60; RH col; <i>Carbost</i> ; Line 6; Delete all from 'Anchor near ... at Carbost' and substitute : 'Anchor near the southwest shore, off the village and the Old Inn. Further west there are 6 yellow visitors' moorings and a pontoon near the recently renovated pier. Pay at the honesty box or the Old Inn.'	
	p.60; RH col; <i>Supplies</i> ; Insert before 'Shop at Carbost': 'New toilet and shower block near car park.'	
Page 62	Loch Pooltiel ; Fish farm	No. 1049
	p.62; RH col; <i>Loch Pooltiel</i> ; Line 7; Delete 'near the opposite shore' substitute 'in the loch'	
Page 64	Dunvegan ; Anchorage amendment	No. 1050
	p.64; LH col; <i>Anchorage</i> ; para. 2; Line 2; Insert 'plan' after 'see' and add at end: 'which gives much better shelter.'	
Page 77	Camus Ban, Arnisdale, Loch Hourn ; Anchorage	No. 1036
	p.77; <i>Anchorage</i> ; <i>Camus Ban, Arnisdale</i> ; Delete para. and substitute : ' <i>Camus Ban, Arnisdale</i> is deep, with a steeply shelving shoreline and some moorings. Anchor towards the west side, clear of moorings using a tripping line.'	
Page 77	Eilean a'Phioaire, Loch Hourn ; Anchorage	No. 1037
	p.77; <i>Anchorage</i> ; <i>Eilean a'Phioaire</i> ; Delete para. and substitute : ' <i>Eilean a' Phioaire</i> (off the south shore) Anchor in 6m, a cable south of the island and a cable offshore. Note drying rocks extending almost a cable east and south of the island. The channel between the island and the shore has a rocky bar, LD 1 '9m, at its northern end.'	
Page 86	Kyleakin ; Visitors moorings removed	No. 1020
	p.86; LH col; <i>Visitors' moorings</i> ; Delete entire para. and substitute : 'The visitor's moorings off the Kings Arms hotel have now been removed. Anchoring is possible but there are many private moorings. Avoid the no anchoring area. Subject to swell in northerlies and wash. The bottom is blue clay.'	
	p.84; Plan; Delete symbol for visitors' moorings north of the hotel at Kyleakin	
Page 86	Kyleakin ; Bus service reduced	No. 1033
	The bus service across the bridge to Kyle of Lochalsh no longer runs at half hour intervals.	
	p.86; LH col; para 5; Line 4; Delete 'every half hour.'	
	p.86; RH col; <i>Services and supplies</i> ; Line 6; Delete 'every half hour'	
Page 88	Inner Sound ; Restricted area buoys moved	No. 1027
	The northern pair of special yellow buoys have been relocated approximately 6 cables further north.	
	p.88; LH col; <i>Underwater weapons testing</i> ; Delete last line; Substitute 'mark the boundaries of restricted areas.'	
	p.89; <i>Light</i> ; Line 7; Delete 'Cable'; Substitute 'Restricted'	

Page 97	Loch Diabaig, Torridon ; Restaurant	No. 1051
	p.97; RH col; <i>Loch Diabaig</i> ; Add new para at end; 'Cafe/restaurant, Gille Brighde, tel. 01445 790245.'	
Page 99	Loch Torridon, Shildaig ; Visitors' moorings	No. 975
	p.99; <i>Anchorage</i> ; Add at end of para; 'There are 2 visitors' moorings south east of the pontoon. £10 per night payable at donation box on pontoon.'	
Page 116	Inner Sound ; Rona Lighthouse range reduced	No. 1024
	p.116; RH col; <i>Lights</i> ; Line 1; Amend range of light to 12M Plan; Amend range of LH from 19M to 12M Also see p.88; <i>Lights</i> ; Last line; Amend range to 12M	
Page 119	Stoerhead ; Range of light reduced	No. 1025
	p.119; RH col; <i>Lights</i> ; Line 3; Amend range of light to 18M	
Page 119	Tiumpan Head ; Range of light reduced	No. 1026
	p.119; RH col; <i>Lights</i> ; Line 5; Amend range of light to 18M	
Page 123	Ullapool ; Leisure centre opening hours	No. 985
	p.123; RH col; <i>Supplies</i> ; Line 5; Insert after 'Leisure Centre': '(open weekdays 12 noon onwards and all day Saturday and Sunday).'	
Page 131	Lochinver ; Diesel berth	No. 984
	p.131; <i>Supplies and services</i> ; Line 1; Delete 'diesel...quay' and substitute 'diesel from fuel point below the harbour office.'	
Page 131	Lochinver ; Bus service reduced	No. 1021
	p.131; <i>Supplies and services</i> ; Line 5; Delete 'Bus to Lairg (rail connection)' substitute 'Bus to Ullapool for Inverness'	
Page 131	Lochinver ; Assynt visitor centre closed	No. 1052
	p.131; LH col; <i>Supplies and services</i> ; Line 8; Delete 'The Assynt ... information' p.131; LH col; <i>Communications</i> ; Delete last line	
Page 145	Kinlochbervie ; Addition to directions	No. 986
	p.145; LH col; para 1; Line 6; Insert new sentence after 'below': 'The inlet is not obvious until you are there.'	