

Kintyre to Ardnamurchan (2020)

This PDF file contains all the amendments for the above volume of the CCC Sailing Directions issued since the edition date shown in brackets. They are grouped by the date of issue and listed by page number. Plans are included only where major changes have been made or when certain amendments are difficult to describe.

Users should be aware that the amendments to this website are not made with the same frequency as those issued by official hydrographic and navigational sources. Accordingly it remains necessary for those who use the CCC Sailing Directions as an aid to navigation to consult the most recent editions of Admiralty charts, all relevant Notices to Mariners issued by the UKHO, NLB, Port Authorities and others in order to obtain the latest information.

Caution

Whilst the Publishers and Author have used reasonable endeavours to ensure the accuracy of the contents of the Sailing Directions, and these amendments to them, they contain selected information and thus are not definitive and do not include all known information for each and every location described, nor for all conditions of weather and tide. They are written for yachts of moderate draft and should not be used by larger craft. They should be used only as an aid to navigation in conjunction with official charts, pilots, hydrographic data and all other information, published or unpublished, available to the navigator. Skippers should not place reliance on the Sailing Directions in preference to exercising their own judgement.

To the extent permitted by law, the Publishers and Author do not accept liability for any loss and/or damage howsoever caused that may arise from reliance on the Sailing Directions nor for any error, omission or failure to update the information that they contain.

The plans in the Sailing Directions and amendments are not to be used for navigation. They are designed to support the text and should at all times be used with navigational charts.

How to use these amendments

These amendments should be printed out in full and used in conjunction with the appropriate volume and edition of the Sailing Directions given at the head of this page. They are not intended to be cut out and pasted into the book, especially when the amendment is lengthy, as space is not always available. Most users choose to mark up the book with a cross reference to the more important amendments in the printout and write only very brief or minor amendments directly into the book.

Amendments added May 2021

Page 19 **Mull of Kintyre ; Tidal times amended**

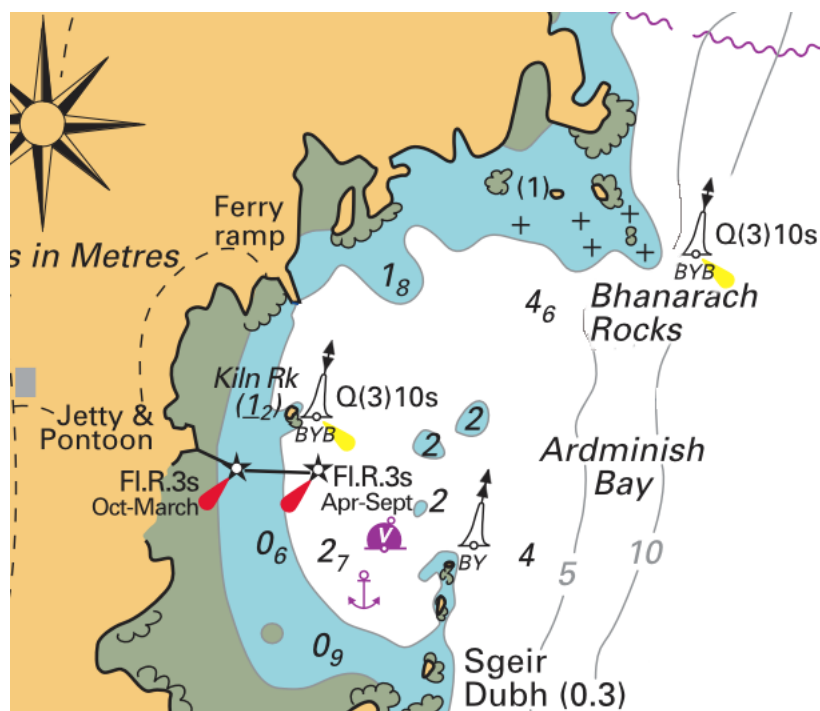
No. 1257

There are three errors relating to the timing for Greenock on the small tidal diagrams.
p.19; LH col; Top diagram; **Delete** '-0505 Greenock' and **substitute** '+0505 Greenock'
p.19; LH col; 2nd diagram down; **Delete** '-0605 Greenock' and **substitute** '+0605 Greenock'
p.19; RH col; Top diagram; **Delete** '+0020 Greenock' and **substitute** '-0020 Greenock'

Amendments added Apr 2021

Page 23 **Sound of Gigha, Ardminish Bay ; Buoy established marking Bhanarach Rocks** No. 1254

The Bhanarach Rocks are now marked by an East Cardinal mark lying just to the east of them.
p.23; LH col; Lights; Line 2; **Insert** after line 2: '**Bhanarach Rocks** E card buoy Q(3)10s'
p.23; RH col; Directions; para 1; Line 6; **Delete** all from 'they are unmarked ... in 2021' and **substitute** 'they are marked by an E cardinal buoy.'
p.23; RH col; Directions; para 2; Line 4; **Delete** all from 'To avoid ... bears 285°.' and **substitute** 'Steer to pass about a cable east of the Bhanarach E cardinal buoy and, when well past it, come round to starboard and head for the moorings.'
p.23; Plan; **Insert** E cardinal mark symbol Q(3)10s in position shown on plan extract below.
p.22; Plan; **Insert** E cardinal mark symbol Q(3)10s in position shown on plan extract below



Page 89 **Loch Melfort, Loch na Cille entrance ; Perch has been replaced by a buoy** No. 1252

p.89; LH col; *Kimelford Yacht Haven; Directions*; Line 1; Delete 'perch with a red can topmark stands on' and replace with 'can port hand buoy marks'

Page 133 **Loch Linnhe, Corran Narrows ; Light established on Rubha Cuil-Cheanna** No. 1224

A new directional sector light together with an all-round light has been established on Rubha Cuil-Cheanna, 1M SSW of Corran Pt, for the benefit of large vessels heading south through Corran Narrows.

p.133; RH col; *Lights*; Add after last line: 'Rubha Cuil-Cheanna Lt. Bn. 1M SSW of Corran Pt. Fl(2)G.8s12m5M + Iso.Dir.WRG(194°)12m5M

Page 134 **Loch Linnhe, Fort William ; Buoy moved** No. 1253

The Fl.G.3s starboard hand buoy off Fort William has been relocated approximately 11/2 miles to the SW, adjacent to a group of large mooring buoys in the centre of the loch.

p.134; Plan; **Delete** the buoy symbol and label shown to the west of the Fort William jetty.

Page 170 **Sound of Ulva ; Fish farm established** No. 1251

p.170; Plan; **Insert** a fish farm symbol in the southern part of the Sound of Ulva (placed immediately below the 5m sounding at the head of the bay).