

## Firth of Clyde (2020)

This PDF file contains all the amendments for the above volume of the CCC Sailing Directions issued since the edition date shown in brackets. They are grouped by the date of issue and listed by page number. Plans are included only where major changes have been made or when certain amendments are difficult to describe.

Users should be aware that the amendments to this website are not made with the same frequency as those issued by official hydrographic and navigational sources. Accordingly it remains necessary for those who use the CCC Sailing Directions as an aid to navigation to consult the most recent editions of Admiralty charts, all relevant Notices to Mariners issued by the UKHO, NLB, Port Authorities and others in order to obtain the latest information.

### Caution

Whilst the Publishers and Author have used reasonable endeavours to ensure the accuracy of the contents of the Sailing Directions, and these amendments to them, they contain selected information and thus are not definitive and do not include all known information for each and every location described, nor for all conditions of weather and tide. They are written for yachts of moderate draft and should not be used by larger craft. They should be used only as an aid to navigation in conjunction with official charts, pilots, hydrographic data and all other information, published or unpublished, available to the navigator. Skippers should not place reliance on the Sailing Directions in preference to exercising their own judgement.

To the extent permitted by law, the Publishers and Author do not accept liability for any loss and/or damage howsoever caused that may arise from reliance on the Sailing Directions nor for any error, omission or failure to update the information that they contain.

The plans in the Sailing Directions and amendments are not to be used for navigation. They are designed to support the text and should at all times be used with navigational charts.

### How to use these amendments

These amendments should be printed out in full and used in conjunction with the appropriate volume and edition of the Sailing Directions given at the head of this page. They are not intended to be cut out and pasted into the book, especially when the amendment is lengthy, as space is not always available. Most users choose to mark up the book with a cross reference to the more important amendments in the printout and write only very brief or minor amendments directly into the book.

## Amendments added May 2021

Page 93 **Mull of Kintyre ; Tidal times amended**

No. 1256

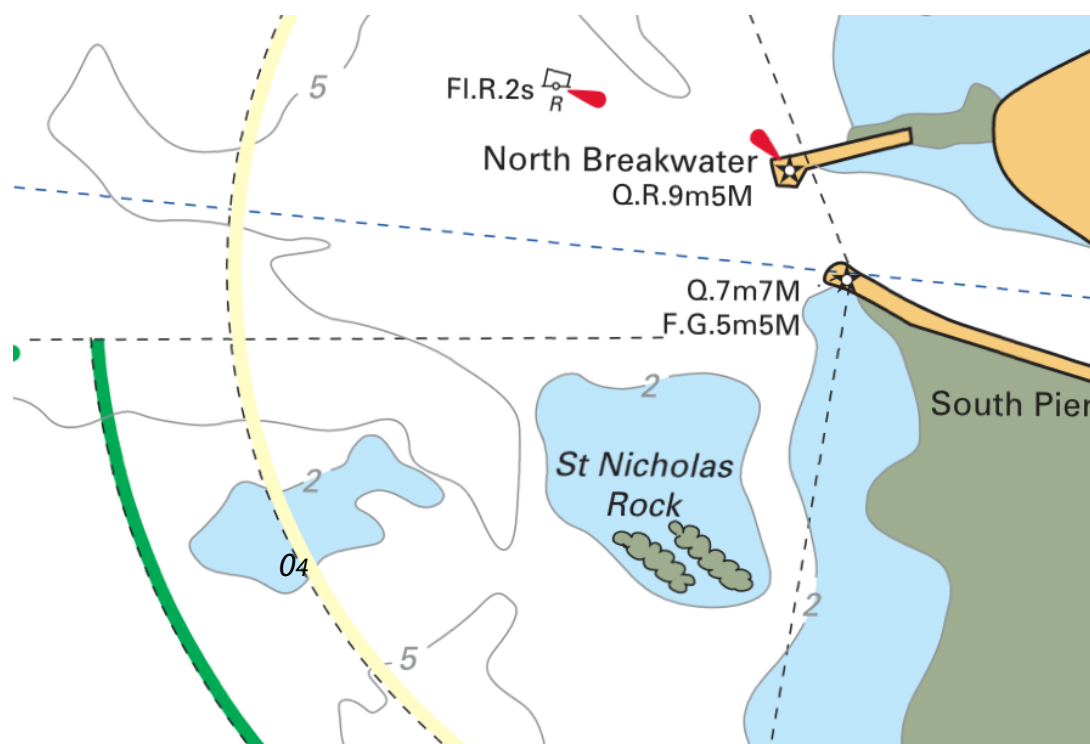
There are three errors relating to the timing for Greenock on the small tidal diagrams.  
p.93; LH col; Top diagram; **Delete** '-0505 Greenock' and **substitute** '+0505 Greenock'  
p.93 LH col; 2nd diagram down; **Delete** '-0605 Greenock' and **substitute** '+0605 Greenock'  
p.93 RH col; Top diagram; **Delete** '+0020 Greenock' and **substitute** '-0020 Greenock'

## Amendments added Apr 2021

Page 18 **Ayr Harbour approach ; Soundings amended**

No. 1245

A 2020 survey has reported a 0.4m depth over the shallow patch west of St. Nicholas Rock.  
p.18; Plan; **Amend** as shown on the plan extract below:



Page 28 **Holy Island, South Channel ; Light extinguished**

No. 1247

p.29; LH col; *Lights*; Line 1; **Delete** all from 'Holy Island Inner Light' to 'north of 282°'  
p.28; Plan; **Delete** light symbol and 'Fl.G3s14m10M'

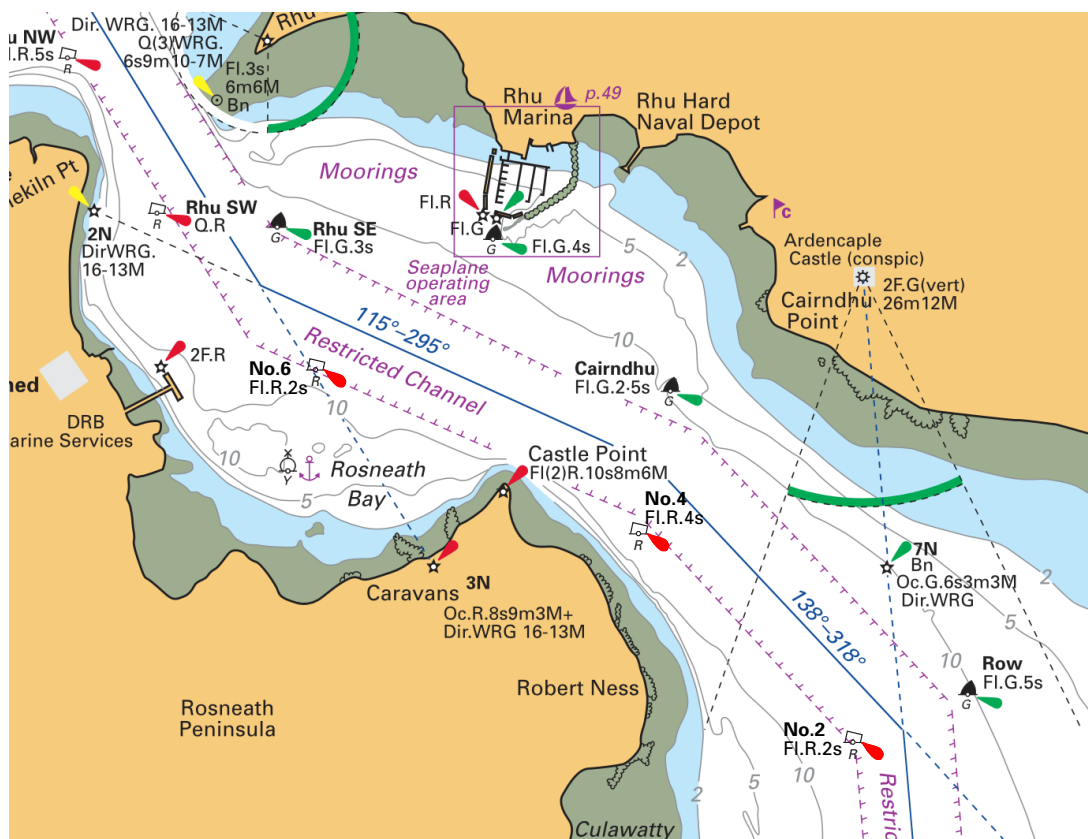
Page 42 **Coulport, Floating dock ; Lights amended**

No. 1248

p.42; LH col; *Lights*; Line 12; **Delete** ; 'occasional FG lights' and **substitute** 'occasional 3F.R (vert)'  
p.42; LH col; *Restrictions*; para 2; Line 2; **Amend** 'green' to 'red'

Three port hand buoys have been established on the west side of the restricted channel in the approach to Rhu Narrows.

p.47; Plan; **Amend** as shown on the plan extract below:



All the following bridges have had their air draught re-assessed and amended by varying amounts.

p.50; RH col; para 4; Line 2; **Amend** '52m' to '54m'

p.54; LH col; *Science Centre Millenium Footbridge*; Line 6; **Amend** '3.2m' to '3.3m'

p.54; LH col; *Bell's Bridge*; Line 4; **Amend** '3.5m' to '3.3m'

p.54; RH col; para 2 (Clyde Arc); Line 3; **Amend** '4.9' to '4.7'

p.54; RH col; para 2 (Kingston Bridge); Line5; **Amend** '18.4m' to '19.3'

p.54; RH col; para 2 (Tradeston Foot Bridge); Line 8; **Amend** '4.9m' to '4.8m'

p.54; Plan; **Amend** the air draughts shown in magenta by each bridge accordingly

p.78; RH col; *Communications*; Line 4; **Amend** telephone number to '01546 606995'

p.94; *Lights*; Line 10; **Delete** '24M' and **substitute** '18M'

p.98; *Lights*; Line 2; **Delete** '24M' and **substitute** '18M'

p.98; *Lights*; Line 6; **Delete** '28M' and **substitute** '18M'

p.116; *Lights*; Line 2; **Delete** '28M' and **substitute** '18M'