

NOTE These are all the amendments issued for the current edition of the Sailing Directions named below. They are grouped by date of issue and listed by page number. A reference number is given for those amendments whose content warrants a replacement plan and these are grouped together following the text amendments.

CAUTION The Sailing Directions referred to and the amendments shown on this web site are published by Clyde Cruising Club Publications Limited. The information contained in the Directions and amendments is selective and does not include all known information for each and every location described. This applies to both text and in particular the plans which should not be used for navigation. The Sailing Directions are written for yachts of moderate draft, and are not intended for larger craft. They should be used only as an aid to navigation in conjunction with current Admiralty charts and pilots, Notices to Mariners, and other official hydrographic data. Each Amendment to the Sailing Directions, should be read and used only in conjunction with the fully published version of the relevant volume of the Sailing Directions to which it relates. Navigators should not place reliance on these Sailing Directions and the amendments thereto in preference to exercising their own judgement. The amendments to this website are not made with the same frequency as those issued by the official hydrographic sources. Accordingly it remains necessary for those who use the Sailing Directions as an aid to navigation to consult the most recent editions of Admiralty Charts, all relevant Notices to Mariners and other hydrographic data to obtain the latest information.

DISCLAIMER Clyde Cruising Club Publications Ltd. ("the Company") and the Clyde Cruising Club (including its individual Members and specifically, but not limited to those members acting as editors and authors) entirely exclude any and all responsibility or liability for any loss, injury, damage, expenses or costs incurred by any person whether directly or indirectly from any error in or omission from the Sailing Directions published by the Company or in any subsequent amendments including specifically the amendments published on this web site.

Ardnamurchan to Cape Wrath (2006)

Amendments added May 2009

Page 3

The Minches and Outer Hebrides

Coastguard forecasts

Plan P/545

The Coastguard have split the Ardnamurchan to Cape Wrath forecast area into two parts: The Minches and the more exposed areas. (see plan P/545 and the description below which should be inserted into the Sailing Directions). Note also that Stornoway Coastguard no longer broadcast the Caledonia area forecast.

Local forecasts; **Delete** the entire para. and **substitute**; In addition to the BBC Shipping and Inshore Waters forecasts, local forecasts for the area from Ardnamurchan to Cape Wrath are forecast by Stornoway Coastguard. The area is divided into two: 1. Ardnamurchan Point to Cape Wrath, excluding the Minch, and extending up to 12 miles W of the Outer Hebrides and 2. The Minch, bounded by lines from South Uist to Rum in the South, and the Butt of Lewis to Lochinver in the North. Initial announcements are made on ch. 16 and thereafter the forecasts are made from the following aeriels; Arisaig ch. 23, Sound of Sleat ch. 86, Portree ch. 84, Melvaig (Loch Ewe) ch. 23, Stornoway ch. 84 and Butt of Lewis ch. 86. Listen for the strongest signal on these channels for optimum reception. Forecasts by Coastguards are made at local time, i.e. the 'clock time' that the broadcast is made remains the same throughout the year. The forecasts by Stornoway Coastguard are made every three hours commencing at 0110 and thereafter at 0410, 0710, 1010, 1310, 1610, 1910, and 2210. In addition Clyde Coastguard also broadcasts forecasts for Area 2, every three hours commencing at 0210 and thereafter at 0510, 0810, 1110, 1410, 1710, 2010, and 2310. The times given are not precise as forecasts may be delayed or omitted during casualty working.

Amendments added Feb 2009

Page 24 **Isle of Muck, Port Mor**

Sectored Lt. discrepancy

A discrepancy between the charted and observed bearings of the Directional Fl.WRG light has been reported as below:

| <i>Charted bearings</i> | <i>Observed bearings</i> |
|----------------------------|--------------------------|
| Green sector 319.5° - 321° | 317.5° - 319° |
| White sector 321° - 323° | 319° - 321° |
| Red sector 323° - 324.5° | 321° - 322.5° |

Sailing Directions to be updated when further information is available.

Page 79 **Ullapool**

Visitors' moorings

Visitors' moorings are planned for 2009 season

Anchorage; Line 1; Delete 'There are no moorings.... tel. 01854 612091' and **substitute** '16 visitors' moorings are planned for the 2009 season. If these are not in place check with the HM, VHF ch. 16, 14 or tel. 01854 612091, who may be able to allocate an alternative mooring.'

Amendments added Oct 2008

Page 67 **Loch Shildaig, Torridon**

Visitors' moorings at Shildaig

Loch Shildaig; para. Shildaig; Line 2; Add after 'Scots pine trees.': 'Also 2 visitors' moorings (free to patrons of the Tigh an Eilean hotel).'

Amendments added Sep 2008

Page 40 **Canna**

Clearing line amendment

Less water has been reported SW of the rock off the pier.

Directions; Line 3; After 'hillside' insert; 'well'. Line 4; after 'rock' insert 'and shallows'

Plan; Amend the clearing line on the plan to be well clear of the double cottage by the shore and extend the 2m contour further SW of the drying rock off the pier.

Page 41 **Sound of Sleat**

Moorings at Duisdale

Isle Ornsay; Anchorage; Line 4; Delete; 'Several moorings.....Duisdale Hotel.' **Substitute; 'Alternatively use the Visitors' moorings** off the Duisdale House hotel.' (See below).

Isle Ornsay; Facilities; Line 1; Delete; 'Duisdale Hotel.....garden produce.' **Substitute; 'Duisdale House Hotel** (tel. 01471 833202), 0.25M further N, has free moorings for patrons (£15 per day otherwise) and provides showers for yachtsmen.'

Page 84 **Lochinver**

Pontoons extended

The pontoon for visiting yachts has been extended by an arm projecting E from the spine with finger berths on the seaward side. The end of the new arm is lit.

Lights; New line 6; Add: Pontoons (E end) Fl. 5s

Plan; Insert new pontoon arm extending E'ward with Fl. 5s light at end.

Amendments added Apr 2008

Page 89 **Loch a'Chairn Bhain** **Power cable removed**

Directions; last 3 lines; **Delete** all after '...narrows' and **Substitute** 'Caolas Cumhann is crossed by the Kylesku bridge with a vertical clearance of 24m.

Delete power cable over Caolas Cumhann on the plan.

Note: The over head power line to the N with only 15m clearance remains

Page 93 **Kinlochbervie** **Berthing directions**

General; Line 4; **Delete** all after '... anchor.' and **substitute** 'The harbour offers perfect shelter and pontoon berths for small boats are situated in the NE corner. Larger yachts should berth alongside by arrangement with the HM (VHF ch 14, tel. 01971 521235). Dues payable.'

Amendments added Oct 2007

Page 47 **Kyle Rhea** **Light Beacon range reduced**

Lights & marks; Line 1; **Amend** range of light to 8-5M

Page 50 **Skye Bridge** **Clearance height amended**

In accordance with the latest edition of chart 2540 (published Nov 2007) the clearance under the bridge should be reduced to 29m on the plan and in the text; *Directions*; Line 4; **Delete** '30m' and **substitute** '29m'

Page 60 **Plockton** **Pontoon Light.**

Insert on the plan, published in the August 2007 amendments, a light, Fl.G 3s, on the E end of the new pontoon.

Page 76 **Loch Ewe** **Amendment to soundings**

Insert on the plan of Loch Ewe a 2m shoal depth within the 5m contour approx 3 cables WSW of No1 buoy.

Amendments added Aug 2007

Page 28 **Canna Harbour** **Pierhead light**

Lights; **Add:** 'Pierhead 2FG (vert)'

Also add this light to the plan on the same page

Page 41 **Armadale, Isle of Skye** **Moorings**

Anchorage; **Delete** all from 'Visitors are asked' to '(see below).' and **substitute** 'All the moorings are managed by Isle of Skye Yachts (tel. 01471 844 216) and arrangements should be made with them for their use'.

Page 57 **Acarseid Mhor, Rona** **Mooring**

Anchorage; Line 2; **Delete** all within brackets and **substitute** 'There is a mooring off the pontoon which, if free, may be used by visiting yachts for a charge of £10 per night payable at the cottage.'

Page 61 **Plockton** **Anchorage & Moorings** **Plan P/373**

Anchorage; **Delete** 'Good anchorage...of the bay' and **substitute** 'An area has been reserved for anchoring where shown on the plan. SE of this area there are 6 visitors moorings and a further 4 just W of the Plockton Rocks. Mooring fees are payable (See notice at pontoon)'

Substitute new plan

Page 72 **Loch Shieldaig** **Removal of ground chain**

The ground chain across the loch was removed during Summer 2007 along with much other debris.

Anchorage; Line 1; **Delete** all between 'there are' and 'The small cove' and **substitute** '6 visitor's moorings. The heavy bottom chain previously shown on the plan has now been removed.'

Delete the cable symbol and associated note from the plan on p.72

Amendments added Jun 2007

Page 79 **Loch Kanaird, Isle Martin** **New pontoon**

The Isle Martin Trust has installed a pontoon on the N side of the bay to the E of the island. The pontoon is marked by a Fl.G 8s light and there is a minimum depth of 2.7m at MLWS. It may be used by yachts for a charge (£5 daytime or £10 for an overnight stay) payable to the Isle Martin Trust Warden.

Amendments added May 2007

Page 25 **Isle of Muck** **Gallanach Bay leading line** **Plan P/285**

Add photograph of leading line into Gallanach Bay, Muck above photograph of Port Mor at foot of page 25

Page 55 **Portree** **New pontoon**

In para. *Facilities* after 'Water at pier' **add** 'where there is a 30m pontoon'

Page 63 **Crowlin Islands** **Drying rocks extended**

The drying rocks on the N'most point of Eilean Mor should be shown to extend at least 0.5c from the shore. **Amend** plan and **add** to para *Approach*, 'From E give the N point of En. Mor a good berth.'

Page 85 **Lochinver** **New shower facilities**

Add at end of para. *Facilities*; 'Showers also available in the new Sports Centre.'

Page 92 **Loch a'Chadh-fi** **Anchorage amendment**

Delete second line of *Anchorage* and **substitute**: Anchor **E of Eilean a'Chadhfi** (roughly halfway between the anchor shown on chart 2503 and the island) in 3-6m, mud. Good holding.

Amendments added Mar 2007

Page 3 **Local Forecasts** **New CG broadcast times**

Delete all after '... thereafter the forecasts are made' and **substitute** 'from the following aeriels; Arisaig ch. 23, Sound of Sleat ch. 86, Portree ch. 84, Melvaig (Loch Ewe) ch. 23, Stornoway ch. 84 and Butt of Lewis ch. 86. Listen for the strongest signal on these channels for optimum reception. As from 1 February 2007 forecasts by Coastguards are being made at local time, i.e. the 'clock time' that the broadcast is made remains the same throughout the year. The forecasts by Stornoway Coastguard are now made every three hours commencing at 0110 and thereafter at 0410, 0710, 1010, 1310, 1610, 1910, and 2210. In addition Clyde Coastguard also broadcasts forecasts for the area from Ardnamurchan to Cape Wrath (including the Minches) every three hours commencing at 0210 and thereafter at 0510, 0810, 1110, 1410, 1710, 2010, and 2310. The times given are not precise as forecasts may be delayed or omitted during casualty working.

Page 28 **Canna** **New lights** **Plan P/281**

The lights and the port hand buoy referred to in the Note have been established with the exception of the 2FG(vert) lights to mark the pier.

Delete the Note in the *Lights* paragraph. **Replace** the existing plan and under *Lights* **add** :-

| | |
|-----------------|-------------------------------------|
| Rubha Carrinnis | Fl.G 3s |
| N Sanday shore | Leading lights Q & ISO bearing 233° |
| Sgeir a Phuirt | Red can buoy Fl.R 2s |

Page 35 **The Little Minch** **Neist Pt. Traffic Separation**

As from the 1st July 2007 a new Traffic Separation Scheme, consisting of one north and one southbound route with a separation zone, will be established off Neist Point. Details will be found in a new edition of chart 1795 to be published in spring 2007.

In the last para. *Passage* after 'is straightforward, but' **insert** 'note the new (2007) Traffic Separation Scheme in operation (see chart 1795) off Neist Point. Account...'

Under *Anchorage*, 'Inverie Bay' **delete** the sentence after '....off village.' and **insert**;
'There is a new concrete ferry pier exhibiting a 2FG (vert) light and with steps for landing.'

In the *General*/paragraph following 'Bo Sligachan" **delete** 'LD 0.4' and **insert** 'dr. 0.2m',

A pontoon, 150 feet in length, for temporary berthing with a depth alongside at the outer end of 2m, has been positioned at the stone pier N of the Sailing Club. Water is not available on the pontoon. A light Fl.G.3s is exhibited at the E extremity of the pontoon.

Amendments added Aug 2006

Facilities: **Delete** 'petrol' from the first line of this para.

A new North Cardinal buoy (Q) has been established approximately 1 cable N of Na Gamhnachain.

Directions - Line 3. After 'outermost rock'. **add** 'which is marked by a N Cardinal buoy (Q) positioned approximately 1 cable to the N.'

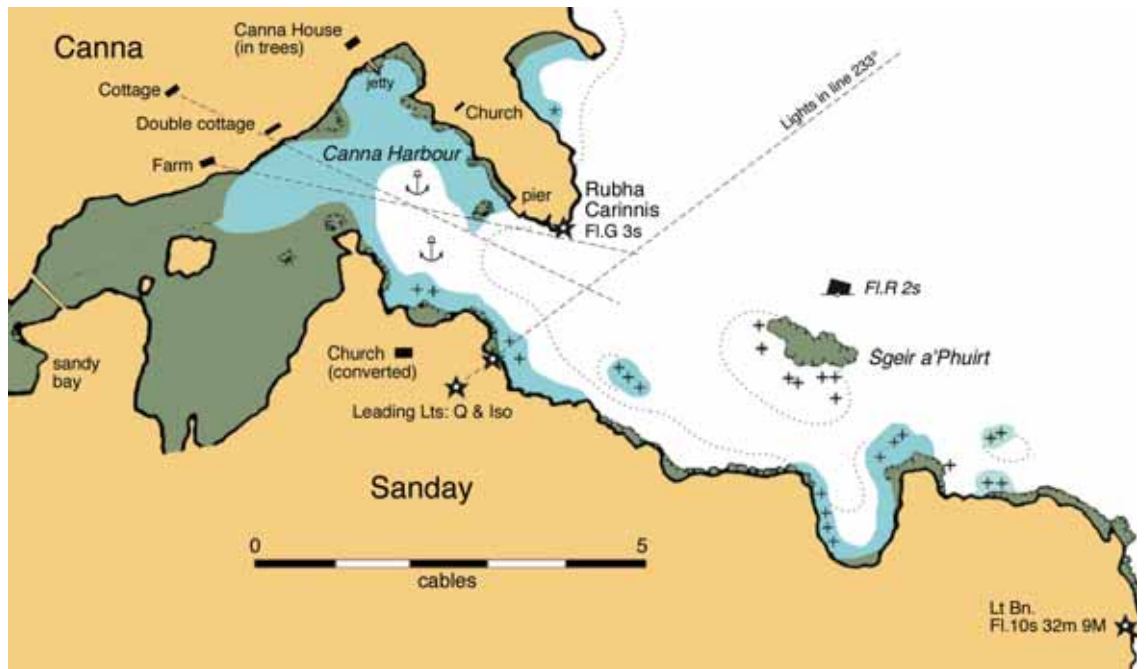
On the last line of the last sentence relative to the approach to the anchorage **amend** 'starboard' to read 'port'. The plan shows the correct position of the perches which should be left to port.

Clyde Cruising Club

Replacement plans for Sailing Directions

© Clyde Cruising Club Publications Ltd.

Plan Ref. No. **Ardnamurchan to Cape Wrath (2006)**
P/281 Page 28 Canna Issue Date: Mar 07



Plan Ref. No. **Ardnamurchan to Cape Wrath (2006)**
P/285 Page 25 Isle of Muck Issue Date: May 07



